

# CHELSEA EXPRESS

SPRING 2021

**River access:  
no installations  
planned in 2021**

**Work to begin this summer  
on Chemin de la Rivière**

**Creation of a *Fonds Vert***







## A word from the Mayor

If the first two waves of COVID-19 were alarming, the third is probably even more so. Some experts are even talking about a new pandemic because of the predominance of the variants. At the time of writing, the numbers in the Outaouais region are very worrying. They remind us all that despite the hope the vaccination campaign brings, the pandemic is not over and we must continue our efforts. Even if we are tired. Even if we have already received a first dose of vaccine.

In Chelsea, we are fortunate to have several facilities where we may enjoy the good weather and take our mind off things. Taking care of our mental health requires attention in times like these. Voie Verte Chelsea (The Community Trail) offers you a recreation area of several kilometers. Take advantage of this opportunity to move about while keeping your distance and respecting the public health measures.

Municipal Council continues to work on various files, including the revision of the Master Plan. Thank you to everyone who took the time to express their views during the recent public consultation. The next stage, which will affect the regulations, will be held this summer. Council is also continuing its work on the river access file in order to find an approach that will be beneficial to the population as a whole. For more information, I invite you to read page 4.

On a more community-oriented note, the Recreation Department is working to offer you different activities for this summer season. Chelsea Days and Musical Tuesdays will be back in a formula adapted to our reality. Be sure to check our various platforms soon for the upcoming program.

Finally, I would like to take a moment to congratulate all the residents and volunteers of the Chelsea Forest Project who helped purchase 57 acres for conservation purposes. This is a great citizen initiative that I hope will serve as a model for many other municipalities. Congratulations to all!



*Caryl Green*

**Caryl Green**

Mayor

c.green@chelsea.ca

819-827-6217





# LATEST NEWS



## News

### River access: no installations planned in 2021

Following the public consultation held last January, Council is continuing its analysis on river access. Council members received the final report of this consultation in mid-April. Thank you to all those who took the time to express their opinion. Over 600 of you voted or commented.

Once Council reaches a decision, several steps must be taken before any installations can be carried out. For this reason, no installations are planned for 2021. The Municipality will eventually conduct feasibility and environmental studies at the sites selected by Council. These studies will be used to assess the work required to ensure that the suggested accesses are user-friendly and safe.

### NO SWIMMING

Until accesses are developed to ensure the safety of users, swimming from a municipal property remains prohibited. The Municipality is in no way responsible for users who access the river from municipal property.

### Shoreline inspections to begin soon

Shoreline inspections along the Gatineau River will begin on private properties at the end of May and will continue throughout the summer. The purpose of these inspections is to ensure the condition of the shoreline and littoral zone in collaboration with the owners, and to verify the compliance of private docks.

Healthy shorelines provide essential ecological functions such as:

- Filtering water against pollution to preserve water quality
- Providing vegetative cover, which in turn reduces sediment infiltration in bodies of water

- Reducing soil erosion
- Providing a solar screen, which protects the water from overheating and consequently reduces conditions conducive to blue-green algae (cyanobacteria) growth
- And much more

Your support and cooperation during this project are greatly appreciated and will help us conserve and improve the health of this invaluable body of water. By-laws are in place to ensure shoreline conservation and waterfront home owners are responsible for the compliance of their lot.

### Council continues its study of the docks by-law

Municipal Council is continuing its study of the by-law concerning docks and conditions of occupancy of the municipal right-of-way along the Gatineau River.

The draft by-law was tabled at the Council meeting last August and residents were asked to comment. Subsequently, Council put this file on hold following comments regarding the importance of considering public access to the river first.

With summer approaching, the Municipality wishes to remind you that no private construction is permitted on municipal land. Furthermore, once the dock by-law is adopted, a decision will be made concerning existing docks located on municipal land.

## COVID-19 target date: June 24!



The Quebec government has set a goal of providing a first dose of vaccine by June 24 to all adults who wish to be vaccinated.

Since the vaccination campaign is based on priority, residents are encouraged to visit the CISSS de l'Outaouais website regularly to find out which groups are eligible and how to make an appointment.

[ciss-ouataouais.gouv.qc.ca/language/en/covid19-en/covid-19-vaccination/](https://ciss-ouataouais.gouv.qc.ca/language/en/covid19-en/covid-19-vaccination/)



## Work to begin this summer on Chemin de la Rivière

Work on Chemin de la Rivière will begin this summer and will take place over a two-year period. The project is currently at the plans and specifications stage. A call for tenders will be held this spring.

Estimated at \$12 million, the work will be carried out in two main phases. The first phase will take place this summer on a non-continuous stretch of approximately 2 km between Route 105 and 207 Chemin de la Rivière and will include partial rehabilitation work. During this period, only local traffic will be allowed.

Due to the delay in obtaining the necessary certificates of authorization from various levels of government because of the proximity of the river and the presence of numerous wetlands, the majority of the work will take place in 2022, during the second and final phase. This will include installation of the foundations, road repair and drainage work, and replacement of the culverts on the remaining section not affected by the 2021 work.

[chelsea.ca/road-works](https://chelsea.ca/road-works)

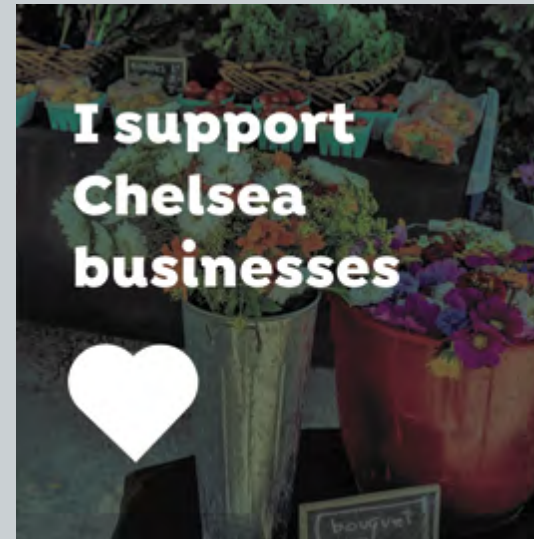
## Work resumes on Chemin du Lac-Meech

Rehabilitation work on Chemin du Lac-Meech resumed in early May between Chemin Dunlop and the Gatineau Parkway. During the work, local traffic will be allowed on the south part of the road. A detour via the north loop will be in place for non-local traffic.

The contractor will replace several culverts on this section. The contractor will then proceed with drainage improvements, pavement rehabilitation, and marking and signage replacement. The work is expected to be completed in early July.

[chelsea.ca/road-works](https://chelsea.ca/road-works)

## Business community, the MRC is there for you!



The MRC des Collines economic development team is more ready than ever to support organizations and businesses that are experiencing the impacts of the pandemic.

New resources have been added to better serve you, and a number of programs are available. Whether your business needs support during these difficult times or you're launching a new project to contribute to a sustainable recovery, the team can provide assistance and direct you to the best resources. They can also help joint developers plan and carry out projects that improve the quality of life of Chelsea citizens!

# Environment



## Creation of a Fonds Vert

The Municipality is pleased to announce that it has established a *Fonds Vert* program to provide financial and municipal support for environmental, sustainable development, and/or active transportation initiatives in the community.

The *Fonds Vert* is open to community members, local entrepreneurs, non-profit organizations, and public agencies (e.g., schools, healthcare institutions, social services, and the Municipality itself). Eligible projects include studies, awareness projects, capacity-building actions, environmental or active transportation events, and other exceptional/significant projects.

Each project selected will be eligible for a financial contribution as follows:

- Projects of \$5,000 or less: The amount awarded could represent up to 75% of the total value of eligible expenses.
- Projects of \$5,001 to \$25,000: The amount awarded could represent up to 50% of the total value of eligible expenses.

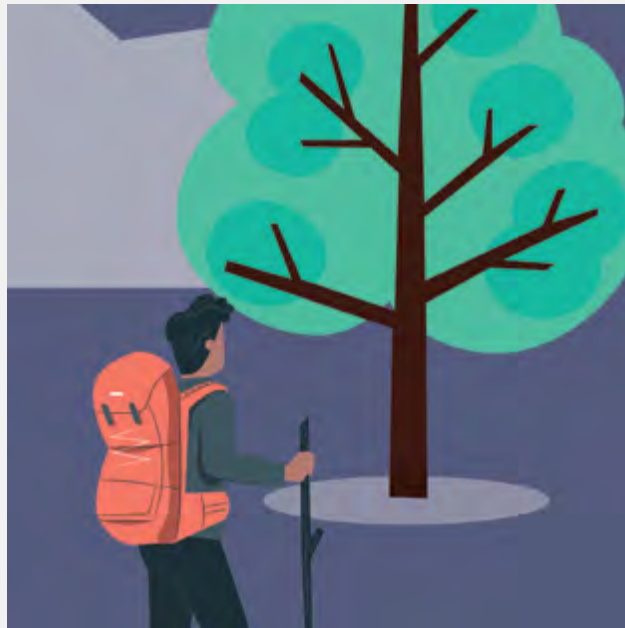
We invite you to consult the *Fonds Vert* policy on our website to determine whether your environmental initiatives could benefit from this municipal grant program.

For the year 2021, project applications will be accepted until May 31.

[chelsea.ca/fonds-vert](https://chelsea.ca/fonds-vert)



## Remarkable Trees Mission



The Municipality is seeking to learn more about the natural heritage of Chelsea's territory in order to keep the collective memory alive. To this end, the Municipality invites you to participate in its Remarkable Trees Mission!

From April to the end of June, become a citizen scientist and identify the remarkable trees you have seen near your home or during your adventures in nature!

### What is an outstanding tree?

An outstanding tree must meet at least one of the following criteria:

- High maturity
- Exceptional size
- Rare or vulnerable/endangered status
- Growing in a historic site

- Planted during a ceremony or cultural event
- Contributes to the structural integrity of the landscape

Multiple other natural or social criteria can also make a tree a "remarkable." We therefore invite you to send the following information to [environnement@chelsea.ca](mailto:environnement@chelsea.ca):

- D- Photos (whole tree, trunk, buds, leaves, etc.)
- Location (GPS coordinates or address)
- Tree species (if known). Please note that resources will be available on the Chelsea website
- Criteria met or reasons why the tree should be considered outstanding
- If you own the land on which the tree is located, please let us know if you would like to share the information collected.

Please note that this is a voluntary project. An inventory and mapping of trees listed will be conducted with the approval of their owners. Data collection will end on June 30, 2021.

## Chelsea to invest \$1 per household in the Municipal Biodiversity Fund!

The Municipality is pleased to announce that it has joined *Fonds des municipalités pour la biodiversité (Fonds MB)*, an initiative of *Société pour la nature et les parcs du Québec* and *Fondation de la faune du Québec*.

By joining Fonds MB, Chelsea commits to contributing the equivalent of \$1 per household or tax unit to the fund each year for land conservation or species protection purposes. Until 2022 this amount

will be matched, at \$1 for each dollar invested, by *Ministère de l'Environnement et de la Lutte contre les changements climatiques*. To use the money, the Municipality must submit an eligible project to *Fondation de la faune du Québec*.

The objectives of Fonds MB are to combat climate change by protecting, enhancing, developing and restoring wildlife habitats and natural areas.

## Waste disposal: encouraging results!

Your efforts seem to be paying off when you look at the annual waste management statistics. See for yourself!

### SINCE 2018

- The proportion of ultimate waste going to landfill has **dropped from 72% to 47%**.
- The proportion of recycled materials has **increased from 28% to 31%**.

### SINCE 2019 (ARRIVAL OF DOOR-TO-DOOR COMPOSTING)

- The proportion of items composted has **increased from 19% to 22%**.

These results are very encouraging as they show an improvement in sorting habits! Overall, we're seeing a decrease in waste going to landfill, better recycling, and most importantly, an increase in composting! However, there is always room for improvement. In addition to making good choices in sorting your materials, try to reduce at the source in order to produce less material that will end up at the landfill and sorting centre!

# QUIZ

## True or false?

**For those who have not had the opportunity to participate in the Sorting Pro Quiz, test your knowledge with these questions!**

**Answers on page 17**

**A. I have to contact the municipality if I want to dispose of my stove.**

Answer : \_\_\_\_\_

**B. You can dispose of a scrap wood pile by bringing it to the Ecocentre.**

Answer : \_\_\_\_\_

**C. Small empty yogurt containers go in the blue bin.**

Answer : \_\_\_\_\_

**D. Incandescent light bulbs must be brought to the MRC's HHW depot.**

Answer : \_\_\_\_\_

**E. Corks stoppers go in the garbage bin.**

Answer : \_\_\_\_\_



# Urban planning



## Beginning of Phase 3: Reviewing the planning by-laws



Last year, a portrait of the current situation, the issues and realities of today, led to a series of recommendations for drafting the revised Master Plan in accordance with the strategic vision and inspired by best practices in urban planning.

Further to the Master Plan, a process started last winter as part of Phase 2, the Municipality is now working on a complete revision of its planning by-laws. The objective is to align the regulatory framework of the planning by-law with the proposed new policy directions of the Master Plan.

As part of this extensive revision, the Municipality wishes to continue the dialogue with Chelsea

residents. The draft by-laws will be posted on the municipal website in July, and a public consultation on them will be held in late summer. It will give residents the opportunity to learn about and comment the revised planning by-laws and will allow the Municipality time to gather input and adjust the by-laws accordingly before they are adopted in the fall of 2021.

This step will allow you to express your opinion on more concrete by-law provisions, such as what type of restrictions should be placed on development to protect the environment or how we could preserve the architectural features that give the Municipality its rural and traditional character.

Thank you to all the residents who have been involved in the process from the beginning. Your cooperation is essential to the success of this review!

[chelsea.ca/plan-en](https://chelsea.ca/plan-en)

## Short-term accommodation: Bill 67 adopted by Quebec

The Quebec government recently adopted Bill 67, which includes new provisions concerning short-term accommodation.

Council and municipal employees are currently analyzing the bill in order to understand the changes and their impact.

More details will be communicated in the coming weeks.

# Public works



## Speed limit changes on Route 105 and Chemin McNally

Based on the recommendations of the Public Works and Infrastructure Advisory Committee, Municipal Council recently adopted a speed limit reduction on a 1-km section of Route 105 between Chemin Sherrin and Chemin Pawley. Effective April 24, the speed limit was reduced from 70 km/h to 50 km/h.

The committee also recommended that a section of Chemin Cecil at the municipal park and soccer fields be reduced to 30 km/h. Signage announcing the speed limit change has been posted to advise road users.

## Residual materials collection switches to the summer schedule

As a reminder to everyone, the arrival of spring in Chelsea means a change in the waste collection schedule.

Since May 3, garbage and recycling are collected on an alternating-week basis and compost is collected weekly. Check the collection schedule to ensure you put the right bin out each week.

[chelsea.ca/residuals](https://chelsea.ca/residuals)

## Collection of household hazardous waste (HHW)



Mark your calendars for door-to-door collection of household hazardous waste the week of May 30. Residents can take advantage of this special collection to dispose of certain HHW at the same time as the regular collection, according to the regular schedule. HHW must be placed on the street next to your bins, starting at 7:00 a.m.

### WHAT IS AN HHW?

These include common household hazardous products such as used oil, paints, solvents, compact fluorescent light bulbs, propane tanks, cleaning products, etc.

Be sure to check the municipal website for the list of accepted products. For safety reasons, HHW that does not meet the standards will not be collected.

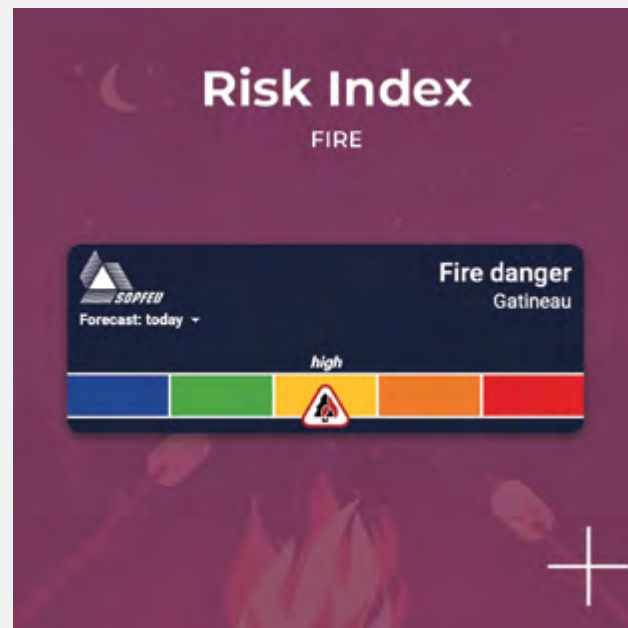
[chelsea.ca/hdr](https://chelsea.ca/hdr)



# Public Security



## How do I know if it's the right time to start a fire?



The SOPFEU fire risk index for the region can be found on the home page of the municipal website. We ask that you refer to it to check the risk index before starting an open fire. However, please note that preventive measures issued by the Municipality, such as a burning permit suspension or a ban on open fires, will take precedence over the SOPFEU fire risk index.

Here's how to adapt your behaviour to municipal regulations and each risk level:

**LOW** Low intensity fire risk with limited spread – This is a good time to light your campfire.

**MODERATE** Moderate risk of surface fire with moderate spread and generally well controlled – Small fires only (1m X 1m maximum).

**HIGH** Moderate to vigorous surface fire hazard that poses control challenges during ground combat – Do not light if wind speed is greater than 15 km/hr.

**VERY HIGH** High intensity fire risk with partial or complete ignition of crowns where conditions at the front are beyond the capability of ground crews – Light fires only in facilities equipped with a prescribed spark arrestor, applicable to Chelsea.

**EXTREME** High intensity, high velocity, potentially uncontrollable crown fire hazard – There is a total ban on all types of fires, including fireplaces with spark arrestors and fireworks.

## Chelsea fireworks by-law

Did you know that all fireworks of any kind are prohibited at all times in the municipality and throughout the MRC des Collines-de-l'Outaouais? This also includes flying lanterns. These are considered open fires, as they are pyrotechnic elements that could spread freely.

In order to use them, you must first obtain a free permit from the Chelsea Fire Department. You can submit your request by phone at 819-827-6200 or by e-mail at:

[incendie@chelsea.ca](mailto:incendie@chelsea.ca)

## Voie Verte Chelsea

## Community Trail officially renamed Voie Verte Chelsea

The Community Trail is now renamed Voie Verte Chelsea and will have its own logo! The name and logo were recommended by the Community Trail Committee and unanimously adopted by Council.

The name Voie Verte Chelsea was chosen to evoke the trail's railway heritage—which remains an important part of its legacy—through the use of the French term voie, which refers to the old railroad line. The new name also refers to the cycling network well known to cyclists: the Route Verte. Finally, it was proposed to adopt a new name to distinguish it from the other community trails in the municipality.

### A NEW LOGO

The official logo was created by Paul Gilbert, resident of La Pêche and graphic designer by profession. The design originally created for the non-profit

organization will now become the trail's official logo. The choice of colours and shapes is a perfect representation of the trail. The inverted triangle represents the "V" of Voie Verte, while the colours recall the natural side of Chelsea. The logo also makes it easy to spot this trail that runs along the river.



## WHAT ABOUT THE VOIE VERTE CHELSEA ORGANIZATION?

Residents were already familiar with the trail's name and logo since it was the name of the community organization Voie Verte Chelsea. To avoid confusion, the non-profit organization has officially changed its name to Les amis de la Voie Verte Chelsea and will use a new logo. The organization was created by Chelsea residents with the goal of raising funds to reduce the costs associated with converting the former rail corridor.



## A COMMUNITY TRAIL AFTER ALL!

Despite the name change and new official logo, the Voie Verte Chelsea Trail is still a community-based multi-purpose trail. Its purpose remains the same: to give Chelsea residents another opportunity to enjoy nature and travel north and south using an active mode of transportation.

## Upcoming work on the Voie Verte Chelsea Trail

You will certainly enjoy the Voie Verte Chelsea Trail on your next family outing. However, despite all the work done so far, it is not yet finished. To avoid

any surprises on your summer outings, here is the schedule of studies and work to come for the year 2021. This work will allow us to finalize development of certain sections and secure the trail.

\*Please note that the work schedule below is subject to change.

### STUDIES AND PLANS TO COME IN THE SUMMER OF 2021

Finalization of the mandate with the firm EXP to prepare various plans and specifications, including stabilization work in four areas, redevelopment of certain intersections deemed dangerous, and plans to install guardrails and five culverts.

Completion of a geotechnical counter-expertise study for stabilisation work in de la Vallée sector south of Chemin Wright.

### WORK TO COME IN THE SUMMER AND FALL OF 2021

- Replacement of existing signage with signage that meets Ministère des Transports du Québec standards at each trail intersection with public or private roads or private driveways
- Replacement of some culverts
- Installation of guardrails at certain trail locations deemed dangerous
- Redesign of trail intersections with Route 105 and Chemin de la Rivière

## \$1.5 million grant for trail work

Thanks to the Government of Québec's Véloce III active transportation infrastructure assistance plan (*Programme d'aide aux infrastructures de transport actif Véloce III - Volet 2 - Amélioration des infrastructures de transport actif*), the Municipality received a \$1.5 million grant for work on Voie Verte Chelsea. This amount will cover nearly 50% of the costs!

## Bike patrollers wanted!

Starting this summer, the Voie Verte Chelsea Trail will be patrolled by volunteers as part of a pilot project with the non-profit organization Vélo-Services. This regional organization provides a presence on various trails to provide first aid as needed, answer questions, and even identify problems or incidents. For the past few years, Vélo-Services has been patrolling Chemin de la Rivière in Chelsea as part of Sunday biking events.

Due to the increase in trail users since the first phase of construction, the Community Trail Committee has recommended moving forward with this pilot project for the 2021 season, from May to October. Part of this goal is to recruit bike patrollers in Chelsea and get more community members involved in the patrol.

## INTERESTED IN GETTING INVOLVED?

Vélo-Services provides CPR, first aid, and basic bicycle repair training. Volunteers will be provided with identification tags, high-visibility vests, and a first aid kits. They will also be equipped with a system to identify and collect information about problems and incidents that occur. Patrollers work in teams of two and provide brief, periodic reports online.

To become a volunteer, you must apply to Vélo-Services directly. The organization asks for a minimum commitment of 3 hours per week (flexible schedule).

For more information, visit

[veloservices.ca](https://veloservices.ca)

## Respect others when on the Voie Verte Chelsea



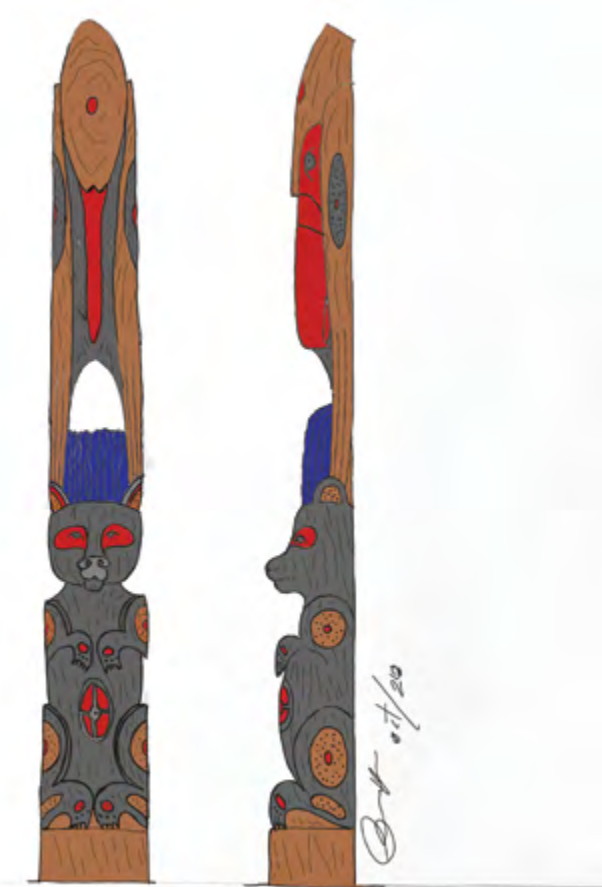
See the complete code of conduct

[chelsea.ca/community-trail](https://chelsea.ca/community-trail)





# Leisure



## NEW ACTIVE TRANSPORTATION PLAN ADOPTED

The Active Transportation Plan (ATP) update has officially been adopted! This new version is a continuation of the one adopted in 2014. Following the public consultation held on the subject last summer, the Municipality was able to validate the vision and adopt an action plan that will guide decisions on active transportation in Chelsea in the coming years.

The new plan seeks to:

- Secure the necessary financial, human, and administrative resources to ensure the sustainability of an active transportation culture in the municipality of Chelsea
- Develop a culture of active transportation with a focus on education, coaching, and promotion
- Engage experts and diverse partners and develop technical tools for effective

transportation planning to prioritize the health and quality of life of residents and visitors by creating a transportation network that is safe, user-friendly, convenient, and dynamic

- Ensure the safety of its network and make sure it is properly maintained

## CHELSEA DAYS IS BACK THIS YEAR!

The recreation team is working hard to prepare a special edition of the Chelsea Days event in keeping with public health measures. The event will take place on the weekend of June 5 and 6 and promises to be another fun-filled event! Stay tuned!

*Please note that the organization of this event will depend on the epidemiological situation in the Outaouais and the sanitary measures in effect.*

## ARTWORK WILL BE INSTALLED IN THE HOLLOW GLEN AREA

As part of the “de Collines et d’eau” route organized by the MRC des Collines-de-l’Outaouais, Denis Charette was selected to create a unique work of art. The piece is entitled MAKWA PIKWATINA MITIKMO or “The tree that tells us about Bear Mountain.”

“Over the years I have installed more than twenty monumental sculptures. My works are meant to be inclusive and reflect a sense of reconciliation between peoples. As an Outaouais native of Algonquin descent, I found the subject of the Hollow Glen area inspiring. My ancestorstravelledthisterritoryforitswildlife,natural resources, and beauty. It inspires me to create a work that reflects this subject, because in a way it is part of my history.”

– Denis Charrette

The totem pole will be built from scratch at the artist’s home and installed in late summer or early fall at the Hollow Glen Community Centre.

# QUIZ

## ANSWERS TO THE QUIZ ON PAGE 9:

**A. True:** A stove is a bulky metallic item. All bulky metal items are picked up on Fridays during garbage week. However, you must contact the Public Works and Infrastructure Department at least 48 hours prior to collection so we can notify the contractor in charge of collection.

**B. False:** Scrap wood piles include construction, renovation, and demolition (CRD) waste that must be recovered by a specialized organization or company. Branches, logs, or stumps can be disposed of when branches are collected at the municipal garage.

**C. False:** Smaller yogurt containers are generally not recyclable unless they have the following icons: 1, 2, 3, 4, 5, or 7. Opt for large yogurt cups. That way, you’ll produce less waste, and the packaging is recyclable (blue bin).

**D. False:** Like LED bulbs, you can dispose of them in the garbage bin. But be careful! Neon and compact fluorescent light bulbs are hazardous household waste (HHW). You can put them on the street during door-to-door HHW collection or bring them to the MRC’s HHW depot.

**D. False:** Natural corks can be placed in the brown bin. If you are composting at home, it is best to cut them into small pieces before putting them in your home composter. Be careful! Imitation (plastic) corks go in the garbage bin.



# Love Reading



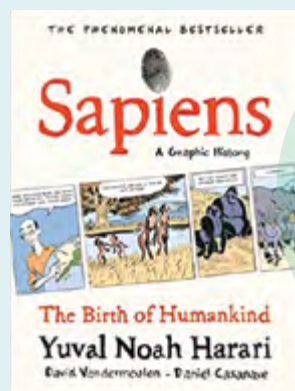
DISCOVER THE RESOURCE  
*À GO, ON LIT!*

**À GO,**  
**ON LIT!**

*À go, on lit* encourages young people between the ages of 14 and 20 to find out what type of reader they are by taking a simple quiz. Depending on their result, different book suggestions are offered. The library has identified in its catalog the books it has in its collection according to the different categories.

Visit the library website at [chelsea.ca/library](http://chelsea.ca/library) and click on the Resource section to take the test.

## BOOK PICKUP

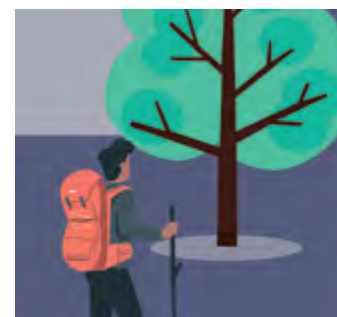


French  
book club  
selection

*Sapiens a graphic history : volume one, the birth of humankind* / Yuval N. Harari

In a world deluged by irrelevant information, clarity is power. How can we see the big picture without getting caught up in an infinity of little details? One way is to step back, to look at the really big picture: the entire history of the human species. *Sapiens: A Graphic History, The Birth of Humankind* is the story of how an insignificant ape became the ruler of planet Earth, capable of splitting the atom, flying to the Moon, and manipulating the genetic code of life.

## Events



APRIL

**22**

TO JUNE 30

**REMARKABLE TREES**

**MISSION**

All over the territory

Help us identify the remarkable trees on the territory in order to better understand our natural heritage!

[Details at chelsea.ca/trees](http://chelsea.ca/trees)



MAY

**31**

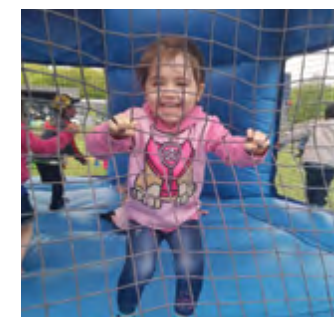
TO JUNE 3

**HHW COLLECTION**

All over the territory

Residents can take advantage of this special collection to dispose of certain HHW. Please check the list of accepted products before putting them out on the street. HHW will be collected during the regular collection. They must be placed next to the bins.

[Details at chelsea.ca/hhw](http://chelsea.ca/hhw)



JUNE

**5-6**

**CHELSEA DAYS**

All over the territory

After a break in 2020, Chelsea Days is back this year! Many activities are waiting for you. Due to health measures, places are limited and will be by reservation only.

[Details at chelsea.ca/days](http://chelsea.ca/days)



JUNE

**15**

**1 p.m. to 7 p.m.**

**BLOOD DRIVE**

Meredith Centre, 23 chemin Cecil

The Fire Department is organizing its second blood drive in partnership with Héma-Québec.

Save the date! More details to come soon.



# Road Works



Plan ahead  
your travels!  
[chelsea.ca/road-works](http://chelsea.ca/road-works)



**Councillor district 1**  
Simon Joubarne  
819-607-1515  
[s.joubarne@chelsea.ca](mailto:s.joubarne@chelsea.ca)

**Councillor district 2**  
Pierre Guénard  
819-790-3662  
[p.guenard@chelsea.ca](mailto:p.guenard@chelsea.ca)

**Councillor district 3**  
Greg McGuire  
819-210-3955  
[g.mcguire@chelsea.ca](mailto:g.mcguire@chelsea.ca)

**Councillor district 4**  
Kay Kerman  
819-827-4708  
[k.kerman@chelsea.ca](mailto:k.kerman@chelsea.ca)

**Councillor district 5**  
Jean-Paul Leduc  
819-827-2782  
[jp.leduc@chelsea.ca](mailto:jp.leduc@chelsea.ca)

**Councillor district 6**  
Kimberly Chan  
873-354-6742  
[k.chan@chelsea.ca](mailto:k.chan@chelsea.ca)



**Municipality of Chelsea**  
100, chemin d'Old Chelsea  
Chelsea, QC J9B 1C1  
[info@chelsea.ca](mailto:info@chelsea.ca)  
[chelsea.ca](http://chelsea.ca)

**Main numbers**  
City Hall 819-827-1124  
Public Works 819-827-1160  
Public Works (after-hours  
emergency) 819-827-9911  
Fire ( general information)  
819-827-6200

MRC des Collines-de-l'Outaouais  
819-827-0516  
Transcollines 819-456-1114  
Emergency 911  
Police 819-459-9911  
Chelsea CLSC 819-459-1112  
Info-Santé 811