

# CHELSEA EXPRESS

SPRING/SUMMER 2022

## Public consultations on the revised urban plan

Do you have your 72-hour emergency kit?

Stone dust surfacing on the Voie Verte





## A Word from the Mayor

Dear residents,

The last few weeks have been extremely busy at the Municipality. On May 21st, we were hit by violent storms that caused a lot of damage in the area and many of us were without electricity for almost seven days. We opened a help centre where you could take a shower, charge your electronic devices, drink a hot coffee and eat a snack, use the Wifi and more. I would like to acknowledge the outstanding work of our municipal staff, firefighters from the Fire Department, Meredith Centre staff, Council members and the many volunteers who quickly mobilized to help you. I would also like to thank the public works employees who worked very hard in the last few weeks to get our municipality back on track. What I remember from this ordeal is the enormous solidarity and mutual aid that prevails in Chelsea.

The good weather is back now, which made Chelsea Days, back after an absence of two years, even better than ever. The summer of 2022 promises to be dynamic, festive and full of exciting municipal projects. Mark July 12, 19, and 26 and August 2 on your calendar. Music Tuesdays are sure to be a hot summer evening favourite thanks to our local artists. I hope to see you there!

In addition, I invite you to take advantage of the beautiful summer days to walk the Voie Verte Chelsea trail which will now be more accessible for people with reduced mobility and young families thanks to the long-awaited stone screening. Several other trails and bike paths are also available to encourage active transportation, whether it's to go shopping, have an ice cream with the family or simply take a bike ride.

On another note, the municipal council continues to work on various projects, including the urban planning review. In the last few weeks, you have been asked to share your vision and ideas during our four public consultations. You have until July 14 to submit your comments by email ([plan@chelsea.ca](mailto:plan@chelsea.ca)) to the Urban Planning Department. Your comments will be taken into consideration in the final update of the by-laws.

Finally, I would like to wish you a wonderful summer. Enjoy the best that Chelsea has to offer.



**Pierre Guénard**

Mayor

[p.guenard@chelsea.ca](mailto:p.guenard@chelsea.ca)

819 827-6217

# LATEST NEWS

## News

### River access: project postponed

Although originally scheduled for January 1, 2022, implementation of the new dock by-law has been postponed to January 1, 2023. Council chose to postpone implementation by one year in order to thoroughly review the by-law and make any necessary adjustments.

As a result of the deferral, Council has also deferred the public river access project.

[chelsea.ca/docks](https://chelsea.ca/docks)

### Payment of Taxes

Haven't paid your municipal taxes in full yet? Take note of the next dates to make your payments:

- July 1
- September 1

Reminder: the grace period for waiving interest and penalties on outstanding tax balances due ends June 30, 2022. As of this date, residents must make their payments on time to avoid interest and penalties on their tax bill.

[chelsea.ca/taxation-en](https://chelsea.ca/taxation-en)

### Do you receive boil water alerts?

Many residents don't seem to receive communications from the Municipality. Did you know that we have a distribution list that allows us to contact residents served by the municipal water system in the event of water outages or boil water advisories? If you are on the municipal water supply, we invite you to subscribe to this list by contacting the Municipality by email at [info@chelsea.ca](mailto:info@chelsea.ca) or by phone at 819-827-1124. This will ensure you receive timely notifications if a boiling water advisory is issued. This information is also available at all times on the Municipality's website and on our Facebook page.

### Waste collection moves to summer schedule

Just a friendly reminder that every spring in Chelsea, the garbage collection schedule changes slightly.

As of May 1, garbage and recycling collection will alternate every other week. Compost will be collected every week.

We invite you to consult the collection calendar regularly in order to put the right bins at the curb.

[chelsea.ca/residual-materials](https://chelsea.ca/residual-materials)

### Collection of household hazardous waste (HHW): upcoming changes

After several delays in the past, HHW collection is getting a makeover. In order to better serve you, the Municipality has decided to change the collection formula. The collection will take place on September 17. Stay tuned, more details will follow shortly.

[chelsea.ca/hhw](https://chelsea.ca/hhw)

### Photo contest returns!



The Municipality is launching its annual photo contest for your free municipal calendar. This year's theme is Chelsea's biodiversity. Be creative and send us your photos depicting Chelsea's rich biodiversity. Photos may feature animals, insects, fungi, plants or trees in their natural environment here in Chelsea. Feel free to dig into your archives! Selected photos will be published in the 2023 municipal calendar distributed to all residents.

To be accepted, photos must meet the following requirements.

- Photos must be in horizontal (landscape) format.
- Files must be at least 300 DPI (2396 x 3198 pixels), have a minimum size of 4 MB and be in JPEG or PNG format.
- Photo credits must be provided.
- You must return the completed authorization form.
- You must respect the theme.

Send your photos to [communications@chelsea.ca](mailto:communications@chelsea.ca) by August 31, 2022.

[chelsea.ca/contest](https://chelsea.ca/contest)

# Environment



## Next invasive and hazardous plant collection



Many invasive plant species can be found in Chelsea. It is therefore important to collect them to avoid problems that affect biodiversity.

The next collection of invasive and hazardous plants will take place on August 3, 2022 from 3:00 p.m. to 7:00 p.m. at the municipal garage at 119 Scott Road.

Here is the list of plants accepted at the collection:

### INVASIVE PLANTS

- Cynanche
- Buckthorn
- Ragweed (allergenic)
- Japanese knotweed

### HAZARDOUS PLANTS

- Giant hogweed
- Wild parsnip
- Poison ivy

Important Note: To ensure the safety of city employees, please bring hazardous plants in properly sealed plastic bags.

Invasive plant management is critical to the protection of our natural ecosystems. [chelsea.ca/plants](https://chelsea.ca/plants)

## Pesticides in Chelsea, it's NO!

The Municipality of Chelsea prohibits the use of pesticides for cosmetic purposes throughout its territory. The use of pesticides is regulated in Chelsea, with only a few exceptions that require a pesticide application permit.

Did you know that there are many alternative solutions and sustainable practices for weed management? Visit our website for more information.

[chelsea.ca/pesticides-en](https://chelsea.ca/pesticides-en)

## The H2O Program is updating its kits!

In response to provincial recommendations, the H2O Program is updating its test kits and pricing schedule. Kits **1-Bacteria, 2-Physical-chemical, and 3-Metals, as well as several others**, are now available at the reception desk if you wish to analyze your well water. Please note that as of July 1, the Health and Aesthetic kits will no longer be accepted when collecting water samples.

To view the new price list and learn which elements are analyzed in each kit, please visit our website.

[chelsea.ca/h2o-en](https://chelsea.ca/h2o-en)

# Urban planning



## A look back at the public consultations



Public consultations on the Master Plan and by-law review were held on May 18 and 19, and June 13 and 14. The consultations provided Municipal Council with an opportunity to present its vision with respect to municipal planning, development, protection and enhancement, as well as how it intends to make this vision a reality in the coming years. The consultations also gave residents a chance to contribute to the Master Plan and share their concerns, needs and expectations for the future of the Municipality.

## Couldn't attend any of our public consultations?

The Municipality has made a video of the June 13 presentation available on the website. You can also access the draft by-laws and explanatory documents to learn more about the ongoing review. You have until July 14 to send us your questions and comments regarding the review of the by-laws and Master Plan. These will be taken into account by the municipal council during their revision. Send your comments by e-mail to [plan@chelsea.ca](mailto:plan@chelsea.ca).

The draft Master Plan was approved by Council on March 28 subsequent to a visioning exercise and to extensive public consultations over a two-year period. At the same time, Council also adopted new draft by-laws on construction, permits and certificates, minor exemptions, and special building construction, modification, and occupancy projects, as well as the first draft of the zoning and subdivision by-laws. A draft Site Planning and Architectural Integration by-law was also adopted at the May meeting.

Council expects to adopt the final versions of the plan and by-laws by the end of the summer of 2022 and submit them to the MRC des Collines-de-l'Outaouais for review this fall.

Stay tuned to the Municipal website for the next steps in the approval of the Master Plan and urban planning by-laws.

[chelsea.ca/plan-en](https://chelsea.ca/plan-en)

# Public works



## Work planned for this summer



### RESUMPTION OF WORK ON CHEMIN DU LAC MEECH (BETWEEN THE PARKWAY AND CHEMIN DUNLOP)

Work on Chemin du Lac Meech was not completed as scheduled in 2021 due to situations beyond our control. Work will resume this summer and will include:

- Stabilization of the embankment
- Relocation of Hydro-Quebec and Bell utility poles
- Asphaltting
- Other work.

The work is expected to be completed by the end of summer 2022.

### RESUMPTION OF WORK ON CHEMIN DE LA RIVIÈRE

The Public Works and Infrastructure Department is still waiting for certificates of authorization from Ministère de l'Environnement et la Lutte contre les changements climatiques and Fisheries and Oceans Canada for the start of the second phase of rehabilitation on Chemin de la Rivière. Work should begin once the certificates have been issued and will include:

- Complete or partial rehabilitation of certain sections
- Redevelopment of the Voie Verte intersection
- Guardrail replacement;
- Other

Due to the fall freeze, work that has not been completed this year will be delayed until the summer of 2023.

### CHEMIN DE LA MINE REHABILITATION

A partial inspection following roadwork on chemin de la Mine revealed certain deficiencies. Work is planned this summer to correct them. The work will include improving the width of the lanes.

### WORK RESUMES ON CHEMIN PATRICK, CHEMIN WRIGHT, AND CHEMIN DE LA VALLÉE

The work begun in summer 2021 on Chemin Patrick, Chemin Wright, and Chemin de la Vallée resumed in mid-June and will continue until early July 2022.

The work this summer will include:

- Restructuring of approximately 350 metres of ditch
- Replacement of seven culverts
- Restructuring of shoulders
- Stabilization work
- Other

The work will be spread over 3 weeks and should be completed by mid-July.

### ROUTE 105: EXTENSION OF THE PAVED SHOULDER

Work to extend the paved shoulder on Route 105 between Chemin Scott and Chemin Drakon northbound was completed on May 26. This extension will allow for safer travel for users of active transportation on Highway 105.

Stay tuned for upcoming work by visiting our website in the Work Information section.

[chelsea.ca/road-works](https://chelsea.ca/road-works)

## Installation of speed radar signson Chemin de la Montagne



On May 10, the Public Works and Infrastructure Department added two speed radars on Chemin de la Montagne. The first one is located at Chemin Apollo,

westbound, and the second one is before Chemin Susan, eastbound. These will improve safety on Chemin de la Montagne which has been experiencing speeding problems lately.

## Saving drinking water is everyone's responsibility!

During the summer months, it is important that municipal water system users respect the regulations regarding the use of drinking water. The hot weather and the increase in consumption during this period are good reasons to make responsible use of this important resource!

- **MONDAY:** Watering, filling a pool or spa and washing a vehicle or building are prohibited at all times
- **TUESDAYS, THURSDAYS, AND SATURDAYS:** Mechanical watering is permitted between 3:00 a.m. and 5:00 a.m. for buildings with even-numbered addresses, when it is not raining
- **WEDNESDAYS, FRIDAYS, AND SUNDAYS:** Mechanical watering is permitted between 3:00 a.m. and 5:00 a.m. for buildings with odd-numbered addresses, when it is not raining



Public  
Security

## Do you have your 72-hour emergency

The storm of May 21 reminded us all of the importance of being prepared for emergencies. A 72-hour emergency kit is a good starting point to ensure that your basic needs are met while waiting for help.



- Towels
- Soap
- Toilet paper
- Plastic garbage bags
- Blankets
- Cash and change
- Set of keys for the car and the house
- Whistle
- Candles
- Lighter and/or matches
- Multi-purpose pocket knife
- Dust masks
- Important personal papers (photocopies)
- Identification documents
- Insurance policies
- Prescriptions for medication and glasses
- Safety plan
- Emergency contact list

### What to include in a home emergency kit

#### IN A PLASTIC BAG OR BIN, GATHER THE FOLLOWING ITEMS:

- Drinking water (2L per person per day for 3 days)
- Non-perishable food (at least a 3-day supply)
- Manual can opener
- Battery operated radio and spare batteries
- First aid kit
- Adhesive bandages
- Sterile gauze pads
- Scissors
- Tweezers
- Pins
- Antiseptics
- Analgesics
- Hygiene items
- Toothbrushes

#### ALSO REMEMBER TO INCLUDE THE FOLLOWING ITEMS:

- For your baby
  - Formula milk
  - Disposable diapers
  - Bottles
- For your pets
  - Food
  - Medication
  - Accessories

Keep your emergency kit in an easily accessible place and check its contents annually. Replace any water or other items that have been used.



## Good to know: fireworks and open-air fires

To start the summer on the right foot, the Chelsea Fire Department has some important information to share about fireworks and open-air fires (By-law 21-RM-05)

### FIREWORKS



In Chelsea and the MRC des Collines-de-l'Outaouais, fireworks (including those purchased in a convenience store and flying lanterns) are prohibited at all times. Exceptionally, it is possible to hold a fireworks display by obtaining a permit and an official authorization from the Chelsea Fire Department. The authorization will be issued following a visit and inspection of the site in question.

To make your request, visit us in person at 7 Chemin de l'Hôtel-de-Ville, make your request by phone at (819) 827-6200, or write to us at

[incendie@chelsea.ca](mailto:incendie@chelsea.ca)

### OPEN FIRES



Open fires are permitted as long as they do not exceed 1 meter (39 inches) in height and diameter. However, certain conditions must be respected (Section 11.2.C) i. to vi.).

Fires in an outdoor fireplace equipped with a spark arrestor (1 cm) are also permitted, but must also respect certain conditions (Section 11.3).

Larger fires (1 to 4 metres maximum) are permitted from November 1 to April 30. Be sure to obtain a burning permit from the Fire Department beforehand (Section 11.7) or you may be fined.

### WHEN IS THE BEST TIME TO HAVE A FIRE?

Please note that if a preventive measure such as a burning permit suspension or a ban on open fires is in effect, it takes precedence over the current regulations.

You can use the SOPFEU fire danger rating ([www.sopfeu.ca](http://www.sopfeu.ca)) to check the hazard level. Here are some tips to help you adapt your behavior according to each level.

**LOW** Risk of low intensity fire with limited spread; this is the right time to light your campfire.

**MODERATE** Risk of moderately spreading surface fire that can generally be well controlled; only build small fires (1m x 1m maximum).

**HIGH** Risk of moderate to vigorous surface fire that poses control challenges for ground crews; do not light if wind speed is greater than 20 km/hr.

**VERY HIGH** Risk of high intensity fire with partial or complete ignition of tree crowns and conditions at the front beyond the suppression capacity of ground crews; light only in facilities with a prescribed spark arrestor. **Applicable in Chelsea.**

**EXTREME** Risk of high intensity, high velocity, potentially uncontrollable crown fire; avoid fires.

**In Chelsea: Total ban on all types of fires, including in fireplaces with spark arrestors, and on fireworks.**

Tip: download the SOPFEU mobile app (available for iOS and Android) and save your municipality in your favorites so you can easily monitor fire danger in your area. Residents have a duty to check the danger level before starting a fire.

During the summer months, the Fire Department responds to numerous complaints about open fires and fireworks, resulting in costly interventions and the deployment of personnel essential to everyone's safety.

[chelsea.ca/burning](http://chelsea.ca/burning)

## Planning of home visits

### FIRE PREVENTION

The Fire Department wishes to inform residents of Ward #1 and #2 that Chelsea firefighters will be conducting household visits to promote fire awareness and inform homeowners about the provisions of Chelsea's Fire Prevention By-law.

The visits will take place on weekdays and weekends, between 9:00 a.m. and 8:00 p.m.

Remember: the municipal by-law stipulates that:

- A minimum of one smoke alarm on each floor is mandatory
- A minimum of one certified carbon monoxide alarm must be installed in each single-family residence or each dwelling unit where a combustion appliance is installed inside the residence or where a parking garage is incorporated or contiguous thereto and where such garage is an integral part of the residence or dwelling unit
- A 2.2 Kilogram (5 lb) ABC powder portable fire extinguisher is mandatory
- A clearance of 1 meter must be respected around the electrical panel
- Your civic number must be visible from the road
- The chimney must be swept at least once a year

# Voie Verte Chelsea

## Contract awarded for stone dust surfacing on the VVC



Good news! With the last culvert work on the Voie Verte Chelsea trail now complete, the Municipality was able to start stone dust surfacing work on June 6. Crews started with the northern portion of the trail and will proceed section by section along its entire length. The work should take approximately 4 weeks.

At its April 5 meeting, Municipal Council thanked residents and Les Amis de la Voie for their involvement in this project. The goal of the surfacing work is to make the pathway more accessible for all users, including people with reduced mobility.

We believe that these improvements will allow everyone to fully enjoy the trail in complete safety.



## Respect others when on the Voie Verte Chelsea



See the complete code of conduct

[chelsea.ca/voie-verte-en](https://chelsea.ca/voie-verte-en)







# Leisure

## COOP CHELSEA IS BACK FOR AN 18<sup>TH</sup> YEAR

COOP Chelsea is back for an 18th year. The Chelsea Youth Collective Entrepreneurship Initiation Cooperative (CICE) is up and running for a new season, with young people ready once again to offer their services to the community. Looking for a helping hand with light work around the house? The CICE team can handle a wide variety of jobs such as painting, gardening, lawn mowing, and more, all at very affordable prices. Contact them now at [ciec@chelsea.ca](mailto:ciec@chelsea.ca) or at 819-360-0630.

Remember that this project gives young people a chance to acquire practical knowledge and hands-on work experience that will be very useful on the job market in the future. The young members of the coop team are supported and coached by group coordinators and community leaders. It's an enriching and challenging life experience!

[chelsea.ca/cice](http://chelsea.ca/cice)

## MUSIC TUESDAYS

A Chelsea must, Music Tuesdays offers free outdoor concerts in several enchanting Chelsea locations.

Take advantage of the nice weather and fresh air to discover local artists in one of our many municipal parks.

Add these performance dates to your summer calendars and don't forget your chair to enjoy the show!

[chelsea.ca/music-tuesdays](http://chelsea.ca/music-tuesdays)

### MUSIC TUESDAYS PROGRAM



JULY  
**12**

**7 p.m.**  
Margot Doucet and  
a special guest  
Hendrick Farm Park



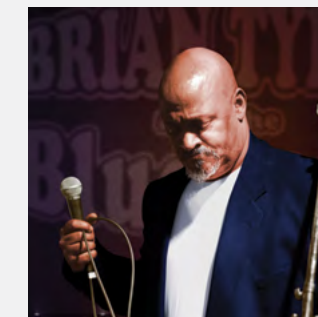
JULY  
**19**

**7 p.m.**  
Allysann Foehring  
Hollow Glen Park



JULY  
**26**

**7 p.m.**  
Atemi  
Farm Point Park



AUGUST  
**2**

**7 p.m.**  
Brian Tyler and the Bluestorm  
Meredith Centre

# Love Reading



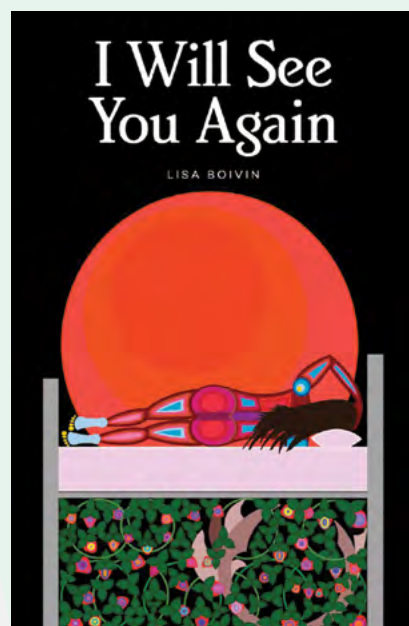
Better informed to live better.

## BIBLIO-SANTÉ: EDUCATIONAL CONTENT TO DISCOVER!

Have you heard of Biblio-Santé? It is a series of 15 thematic booklets offering quality resources on health-related topics. Each booklet presents a list of organizations, a selection of relevant websites and suggestions for books and films. The information has been selected, analyzed and validated by certified librarians. Look for the Biblio-Santé logo at the Chelsea Library!

Here are some suggested titles in this category:

### I WILL SEE YOU AGAIN

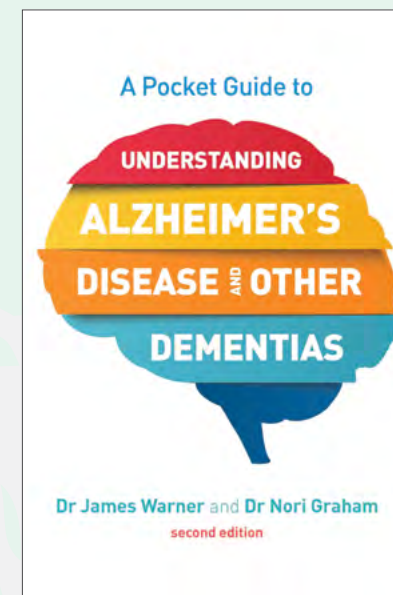


Item available: **Non-fiction**  
– Call number: **155.9 BOIVI**

Written and illustrated by **Lisa Boivin**

Lisa Boivin is an artist and bioethicist. A member of the Deninu K'ue First Nation in the Northwest Territories, she brings together bioethics and the land-based practices of Dene medicine through her paintings and writing. Lisa is a bioethics specialist in the Faculty of Arts & Science at the University of Toronto. She lives in Toronto.

### A POCKET GUIDE TO UNDERSTANDING ALZHEIMER'S DISEASE AND OTHER DEMENTIAS



Available item: **Albums jeunes**  
– Call number **616.8 WARNE**

By **Dr. James Warner and Dr. Nori Graham**

If you or a loved one are worried about Alzheimer's disease or other types of dementia, this pocket guide will help you to better understand the conditions, and how they are diagnosed and treated. Written by leading dementia experts, this book provides clear and concise information on

## LIST OF THEMATIC BOOKLETS

- Alzheimer's Disease
- Autism Spectrum Disorder
- Bereavement
- Cancer
- Caregivers
- Diabetes
- End-of-life care
- Heart Disease and Stroke
- Intellectual Disability
- Mental Health
- Multiple Sclerosis
- Parkinson's Disease
- Physical Disability
- Pulmonary Disease
- Seniors and Aging



## TD SUMMER READING CLUB

The TD Summer Reading Club is Canada's biggest summer reading program. Open to both English and French speakers, the Club is designed for children of all ages, regardless of their tastes and abilities.

Register your child for the Reading Club in June so that they have the chance to participate in activities during the summer!

Watch our website or Facebook page for more information!

# Are you doing the necessary tests for your home?

It is recommended that you test:



your **well water quality** once or twice a year



the **air for radon** on each inhabited floor of your home

Often, radon and water contaminants have no taste, no odor, and no color. That's why it's essential to do the necessary testing.

Get the tests at Town Hall.



[chelsea.ca/h2o-en](https://chelsea.ca/h2o-en)

[chelsea.ca/radon-en](https://chelsea.ca/radon-en)

## Councillor district 1

Enrico Valente  
[e.valente@chelsea.ca](mailto:e.valente@chelsea.ca)  
613 720-4640

## Councillor district 2

Dominic Labrie  
[d.labrie@chelsea.ca](mailto:d.labrie@chelsea.ca)  
819 962-5354

## Councillor district 3

Cybèle Wilson  
[c.wilson@chelsea.ca](mailto:c.wilson@chelsea.ca)  
819 664-6947

## Councillor district 4

Christopher Blais  
[c.blais@chelsea.ca](mailto:c.blais@chelsea.ca)  
613 808-2078

## Councillor district 5

Rita Jain  
[r.jain@chelsea.ca](mailto:r.jain@chelsea.ca)  
819 866-3070

## Councillor district 6

Kimberly Chan  
[k.chan@chelsea.ca](mailto:k.chan@chelsea.ca)  
873 354-6742

**YOUR  
COUNCILLORS**

## Municipality of Chelsea

100, chemin d'Old Chelsea  
Chelsea, QC J9B 1C1  
[info@chelsea.ca](mailto:info@chelsea.ca)  
[chelsea.ca](http://chelsea.ca)

## Main numbers

Town Hall 819-827-1124  
Public Works 819-827-1160  
Public Works (after-hours  
emergency) 819-827-9911  
Fire ( general information)  
819-827-6200

MRC des Collines-de-l'Outaouais  
819-827-0516  
Transcollines 819-456-1114  
Emergency 911  
Police 819-459-9911  
Chelsea CLSC 819-459-1112  
Info-Santé 811