

CHELSEA EXPRESS

WINTER 2021

**This winter,
play it safe
in the great
outdoors!**

**New public
consultations
on access to the
Gatineau River**

**The latest on
our Sustainable
Development
Action Plan**





A word from the Mayor

Even if 2020 is now behind us, 2021 will not be easy. The last few weeks have shown us that we still have a long way to go before returning to a normal life. This winter, there will probably be more of us than usual taking advantage of our outdoor infrastructure. Health measures must continue to apply, even in parks, on skating rinks and on the Community Trail. As Mr. Legault says, we are in the last kilometers of a marathon, and these are the most difficult. Now is not the time to let go.

In December, Municipal Council adopted the last budget of its mandate, which includes several great projects related to our active transportation and sustainable development action plans. I invite you to read the finance section on page 14 for all the details. Among other things in this budget, Council has planned to continue advancing the issue of river access along the Community Trail by launching a public consultation to allow you to identify various potential public sites. The consultation is now underway and you have until February 18 to make your views known. I invite as many of you to participate as possible.!

The budget also includes an amount to finalize the Master Plan review. Shortly, we will begin the next public consultation. At the risk of repeating ourselves, your involvement is essential to the success of this process so that the new by-laws reflects your concerns. Be sure to watch our platforms for the launch of the public consultation.

Finally, a working group will convene in 2021 to implement the action plan arising from the Seniors and Family Policy. This policy is a valuable tool for providing a favourable and inclusive living environment for families and seniors, improving their quality of life and encouraging them to become fully involved in their community. It is a subject that is close to my heart and I am very happy to know that actions will be taken this year.

As you can see, 2021 promises to be a busy year with many projects, and your participation will be central to them!

On behalf of Municipal Council, I wish you all the best for 2021!

Happiness and health!



Caryl Green

Caryl Green

Mayor

c.green@chelsea.ca

819-827-6217

LATEST NEWS

Public consultation on access to the Gatineau River

The public consultation on the Gatineau River access project is now launched! The Municipality of Chelsea is looking for three to four suitable locations for its residents to access the Gatineau River along the Community Trail.

To this end, the public consultation has been divided into three main themes:

- site for swimming;
- community dock and swimming;
- boat launches and amenities.

For each proposal of the first two themes, a map indicating the location is available so that you can better understand what you are voting on. The choices proposed in this consultation were suggested by community members and municipal officials, but all participants are invited to submit a new proposal. The public consultation will be followed by a feasibility study assessing the accommodations needed to ensure the suggested accesses are user-friendly and safe. Based on the results of this study, Council will make its final selection.

Protecting the tranquility of private property remains a priority for Council and the Municipality. As such, any community access will be in front of existing municipal lands or vacant spaces, to allow community trail users to enjoy the river without disturbing the neighbourhood.

The consultation is held via the Cocoriko platform. To participate, you must log in or create a new account.

Deadline to participate : February 18

chelsea.cocoriko.org

COVID-19: The situation is changing quickly, but we remain available!

Even though our administrative offices are closed, practically all municipal services are still available. Contact our team at any time by phone or email.

Also be sure to keep up-to-date on COVID measures by visiting our website regularly.

chelsea.ca/covid-19

Municipality receives financial support from UMQ for recourse against NCC

The Union des Municipalités du Québec (UMQ) board of directors has awarded financial assistance to the Municipality to help it in its recourse against the National Capital Commission (NCC). The money will be used to pay part of the legal fees, up to a maximum of \$10,000. The towns of Boisbriand and Amqui have also been selected for similar assistance. UMQ's support for these causes is because of their likely impact on the municipal community as a whole.

The Municipality is currently awaiting the conclusions of the Payments in Lieu of Taxes Dispute Advisory Panel (DAP). The hearing was held last November to contest the \$1.4 million shortfall in revenue owed by the NCC in payments in lieu of taxes since 2018 for their properties in Gatineau Park. It could take several more months to reach a decision.

Join our team!

The Municipality is currently looking to fill three positions.

- Administrative assistant - Planning and Sustainable Development Department
- Mechanic
- Civil Engineering Technician / Project Manager

chelsea.ca/careers

Cancellation of interest and penalties on outstanding tax balances

At the regular Council meeting held by videoconference on January 12, 2021, Council unanimously decided to cancel interest and penalties on outstanding tax account balances. The cancellation applies for the period extending from March 1st to July 1st, 2021. This decision was made to help residents during this uncertain time.

Postdated cheques already received will be cashed on the due dates unless residents request otherwise. We encourage all those who are in a position to make their tax payments to do so on the due dates in order to maintain the Municipality's cash flow.

chelsea.ca/taxation

Voie verte Chelsea donates \$78,500 to Municipality for Community Trail

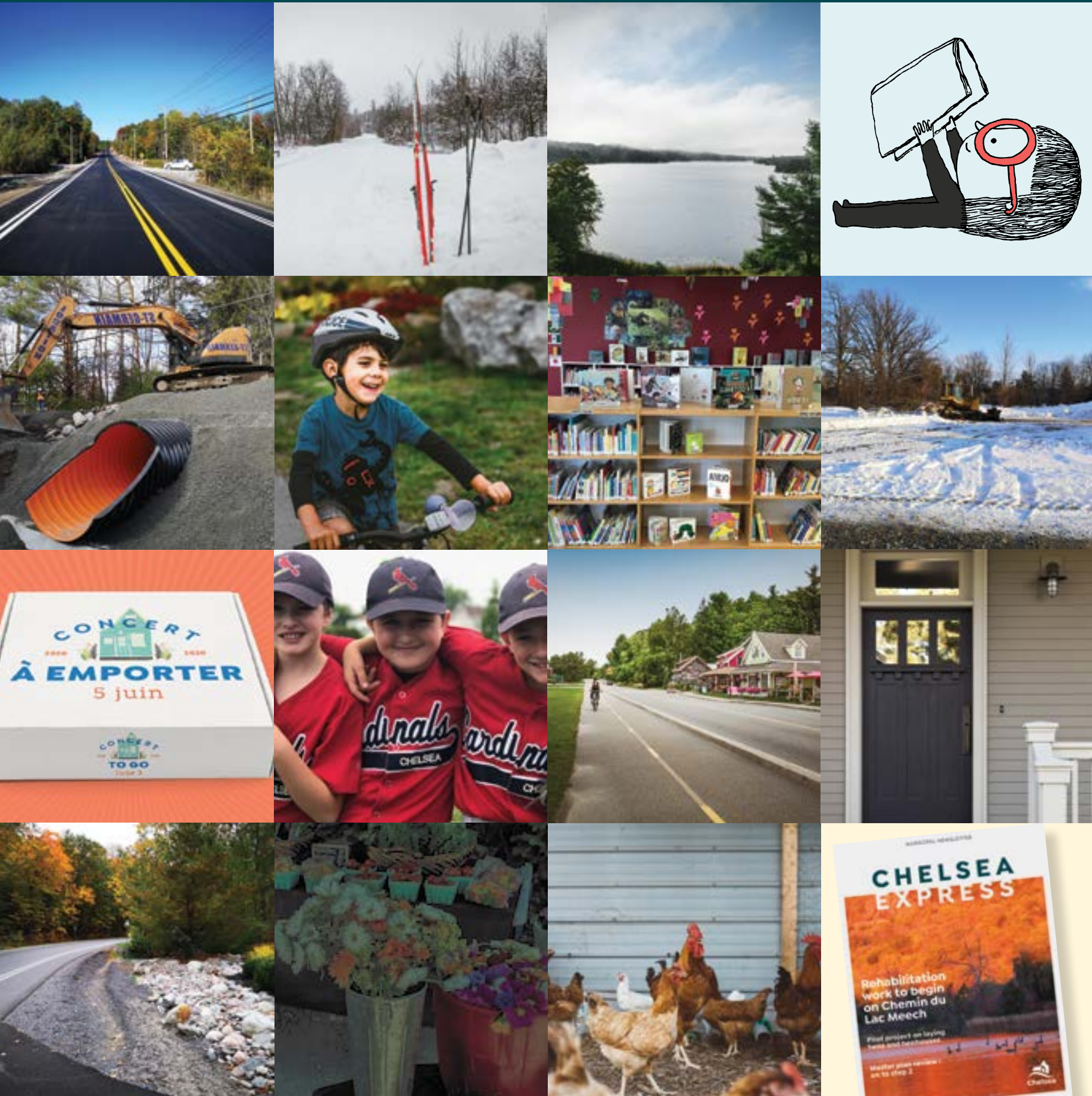


The Municipality and Municipal Council would like to thank Voie Verte Chelsea for their \$78,500 donation, which will be used for the next development phase of the Community Trail. The cheque was presented to Mayor Caryl Green and Director General and Secretary-Treasurer John-David McFaul on December 11.

Donations were raised through the fundraising efforts of volunteers, sponsors, trail pioneers, and supporters.

A huge thank you to everyone involved!

LATEST NEWS



2020: a year like no other, but no less busy!

In addition to COVID-19, a lot happened in Chelsea in 2020! Despite constraints, the municipal team has worked tirelessly to complete many projects and has initiated several that will continue into 2021.

A brief look back at some of the projects:

- Sustainable Development Action Plan review process launched
- Foundation laid along the entire length of the Community Trail
- New contactless document loan service implemented
- Public consultations conducted to update the Active Transportation Plan
- Pilot project launched to allow the keeping of laying hens
- Work finalized on Chemin de la Mine
- Buy Local Campaign launched in support of Chelsea businesses
- Concert to Go introduced
- 14 Hydro-Québec lots purchased
- Chelsea Creek stabilization work finalized
- Work begun on Chemin du Lac-Meech between P8 and P9
- Baseball field lights installed
- Irrigation system for soccer field installed
- Route 105 partially reconstructed between Chemins Scott and Meredith
- Concrete curbs removed on a section of Route 105
- Farm Point Community Centre access ramp redeveloped
- Greenhouse gases within municipal limits inventoried
- 44,000 documents loaned out
- Over 1,000 permits and certificates delivered (an all-time record!)
- New visual identity for the Municipality and library adopted
- Chelsea Express redesigned
- Public consultations conducted for the visioning exercise for the revision of the Master Plan
- Study launched on traffic and parking in the west end of the Centre-Village
- Several policies and regulations adopted and various draft regulations developed

The team is ready for 2021! For the main projects adopted in the budget, go to page 14.

Urban planning



10% park fees now based on market value



Developers undertaking a project are required to transfer 10% of the land being developed to the municipality or provide monetary compensation equivalent to 10% of its value, or a combination of both. The Act respecting land use planning and development authorizes municipalities to require such compensation, but solely for the purchase, development, or improvement of parks, playgrounds, or natural areas.

To strengthen this vital revenue source for the Recreation Department, the Municipality has adopted two new by-laws that add to the number of situations in which compensation may be required. From now on, land value will be calculated based on market value, and compensation may be required in the case of redevelopment projects or projects that intensify

existing activities. The new by-laws include specific scales and exceptions so that the new requirements do not apply to routine renovations or additions to private residences by their owners.

For more information, please contact the Planning and Sustainable Development Department at permis@chelsea.ca.

New heritage protection by-law

Municipal Council has adopted a new demolition by-law to provide additional protection for cultural or heritage properties.

From now on, all demolition applications must be submitted to the Demolition Committee, a decision-making committee made up of three councillors: Jean-Paul Leduc, Greg McGuire, and Kimberly Chan. In the event that an applicant wishes to appeal a decision, it will be up to Council to decide.

This by-law is in addition to the by-law on site planning and architectural integration programs (SPAIP), which already provides for the partial protection of heritage buildings located in the Centre-Village center and listed in the Master Plan, including their renovation, relocation, expansion, and demolition. It will allow the Municipality to issue fines of between \$10,000 and \$250,000 to any person having carried out a demolition without authorization, to oblige offenders to reconstruct the demolished buildings, or to require a deposit guaranteeing the construction of a replacement building.

The by-law will be posted on the municipal website. For more information, please contact the Planning and Sustainable Development Department at permis@chelsea.ca.

Master Plan Review



Visioning exercise

Last year, the Municipality completed a visioning exercise in order to identify the community's values and concerns, as well as its main strengths and weaknesses. Three fundamental values were identified during the exercise:

- The Environment: Chelsea residents are aware of the natural environments that surround them and appreciate their proximity. They recognize that this richness is fragile and must be protected.

- Social diversity: Residents also want a better social mix through the creation of housing adapted to everyone's needs (e.g., affordable, rental, intergenerational housing) as well as services and shops in line with their reality. The goal is to allow residents to live, grow and work in Chelsea in an environment that meets their needs at every stage of their lives.
- Economic dynamism: Chelsea residents want to support local economic development and vitality without compromising the peaceful, village-like character of the municipality.

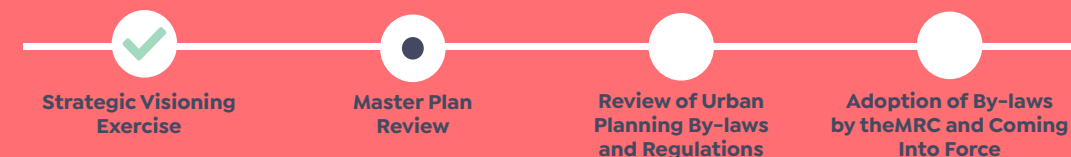
Curious to learn more about the results? Check them out on our website.

chelsea.ca/plan

Second step: Master Plan Review

The Municipality is preparing to launch a second round of public consultations within the next few weeks, this time on the Master Plan. The Master Plan is designed to harmonize land use, not only by determining where housing, businesses and industries will be located, but also by providing for transportation networks, parks, natural areas to be protected and municipal facilities. This second phase will also include workshops with community groups and stakeholders, as well as an online public consultation. Your ideas and comments will enable us to determine the orientations, objectives and methodology that will guide land use and development planning in Chelsea. Stay tuned!

Four main steps



Environment



The latest on our Sustainable Development Action Plan



The Municipality's Sustainable Development Action Plan (SDAP) was adopted in 2018 in order to prioritize new initiatives and strengthen those already underway. It includes actions grouped under the three main pillars of sustainable development: environmental, social, and economic. Chelsea was the first municipality in Outaouais to adopt such a plan. As we enter the last stretch, here's a look at what we've accomplished so far!

ENVIRONMENT

- Greenhouse gases (GHG) generated within Chelsea municipal limits are currently being inventoried, specifically those produced by vehicles, septic tanks, and municipal buildings.

- As part of the review of the Master Plan and planning by-laws, a study of the ecological values of the urban perimeter was conducted in 2020 to classify the ecological value of the territory.
- A door-to-door compost and hazardous waste collection program was put in place in 2019, and awareness campaigns on waste sorting and composting were run.
- Surface water analysis continued under the H₂O program to assess the health of Chelsea's main watercourses and bodies of water.
- A program for the removal of terrestrial plants during the summer season was implemented, and the annual collection of invasive exotic species (IES) at the municipal garage continues.
- Greening principles in the construction, renovation, and demolition (CRD) sector will be integrated into the next Master Plan (under revision) and included in municipal building by-laws.
- In order to encourage the use of electric cars, the zoning by-law requires installation of charging stations at parking lots with more than 50 spots. The Municipality is also studying the possibility of installing charging stations within its limits for residents and visitors.

SOCIAL

- Provisions to promote multigenerational and seniors' residences will be included in the Master Plan, which is currently under review.
- A seniors' residence project is underway at Farm Point, and the SPAIP has been approved for another seniors' residence project in the Centre-Village.
- Each time a new park is created, consideration is given to creating an intergenerational area. Parc du Ruisseau, for example, includes facilities for seniors.

- A working group on health services in Chelsea has been created. It has been successful in getting a nurse back on staff at the Chelsea CLSC and is currently working in collaboration with the CISSSO and the CLSC to improve services for the general public.
- The Municipality adopted the Physical Activity, Outdoor, and Sports Policy in 2018, and a sports equipment loan program was set up at the library.
- Radon mitigation measures have been added to the construction by-law for new buildings to ensure healthy living environments.

ECONOMY

- The Municipality is part of the Fair Trade Village movement and encourages the purchase of local products.
- The Municipality is currently awaiting entry into force of a related provincial law before finalizing municipal regulations on short-term rental accommodations (Airbnb). Its goal is to collaboratively allow for a wider selection of tourist accommodations in the area.
- A tourist map was drawn up in cooperation with Commerce Chelsea in the past, and a second one is planned for 2021.

A lot has been achieved since 2018, and this is only the beginning. The Plan will be updated in 2022 in consultation with municipal committees and the public.

Let's continue to work together for a sustainable future!

Let's be sorting champions!

The municipalities of L'Ange-Gardien, Cantley, Chelsea, and La Pêche have joined forces to promote awareness about waste sorting with the Sorting Pro trivia quiz. Test your knowledge, become a Sorting Pro, and help Chelsea win! Every point you earn puts us closer to first place.

Sorting Pro is a fun, eco-friendly competition between municipalities. It's an opportunity to refresh your knowledge, but also to discover all the services available in our municipalities and MRC.

Let's show our neighbors we really know our stuff—all in a spirit of regional friendship to help reduce our ecological footprint!

When: February 16 to March 23

How: Go to quiz-intermunicipal.ca and enter your postal code to start the quiz. You'll learn all kinds of additional information after each of your answers before you get your final score. Remember to share the quiz with friends and family!

So, are you a Sorting Pro?

quiz-intermunicipal.ca

Public works



Ongoing study to improve access to the Centre-Village



Engineering firm CIMA+ has been mandated to conduct a traffic and parking study in the downtown area. The Municipality is concerned about traffic flow, road user safety, and ease of access. Obviously, recommendations will also have to make allowance for active transportation solutions.

The area covered by the study is bounded by Chemins Padden, d'Old Chelsea and Scott and includes the Chemin Kingsmere/Lac Meech and Scott/d'Old Chelsea intersections. The study will also look at how

residential growth and tourist attractions affect the movement of people and vehicles. Traffic, parking, and travel demand will be analyzed, and solutions to optimize them will be put forward along with recommendations for the safe development of active transportation.

The study's conclusions will allow the Municipality to enunciate an overall vision for Chemin d'Old Chelsea. The project is currently 75% complete.

Don't block snow removal!

During the winter, your cooperation is essential to facilitate snow removal.

- No snow or ice may be thrown or disposed of on public roads, even when snow is being cleared from a driveway.
- No roadside parking is allowed during snowstorms.
- No parking is allowed on public roads between midnight and 7 a.m. from November 15 and April 1 inclusively.
- All bins must be placed on driveways and not on the street so that they do not interfere with snow removal.
- Snow castles, tunnels, or forts should not be built near roads.



Enjoy the ice rinks safely!



Limit of 15 people on the ice rink



Skating and hockey solo or with members of his family bubble



No hockey games allowed

Keep 2 metres apart



Thank you for your collaboration in order to comply with public health regulations.



2021 Budget Mayor's word

I am pleased to present the fourth and final operating budget of this Council. Despite the challenges and uncertainties created by COVID-19, Council and Municipal staff have managed to construct a realistic budget of \$21.3 million focused on sound financial management, the environment, and active transportation.

I am very pleased to announce that for 2021, there will be no increase in the property tax rate of an average residence. The MRC's new three-year assessment roll for 2021-2022-2023 showed an average increase in taxable assessments of 6% across all categories. For this reason, Council voted in favour of a 6% decrease in the property tax rate for both residential and non-residential properties. In addition, the increase in revenues generated by new developments allows us to adopt this reduced rate.

Sound financial management

For Council, the increase in our revenues reinforces the importance of sound financial management

in order to ensure smart investments, limit new spending and ensure faster repayment of existing debt, while maintaining the flexibility to resolve any exceptional situations that may arise. A policy on the management of long-term debt and accumulated surpluses was adopted this year. It establishes specific ratios in addition to setting targets and minimum or maximum acceptable levels.

Throughout the budget process, particular attention was paid to complying with this policy. Council ensured that it respected the established ratios and carried out its investment projects while limiting the increase in long-term debt. Various work will be paid from the operating budget and the unrestricted surplus. In total, almost \$1 million will not be added to the debt.

In addition, upon filing of the audited 2020 Annual Financial Report, if possible, an additional amount will be placed in a surplus earmarked for the repayment of long-term debt.

Finally, a study on road degradation was included in the budget in order to better plan the work required to repair and maintain the roads. An amount has also been included to carry out certain analyses to better anticipate future needs in the Center-Village. Although new developments generate significant revenues, they also create needs in terms of services and infrastructure. This analysis will therefore allow us to plan them better.

Investments in the environment and active transportation

Many excellent projects were included in this year's budget related to the environment and active transportation. Again this year these items are priorities for Municipal Council.

Fonds vert municipal

Municipal Council has decided to establish a Fonds vert municipal that will allow the Municipality, as well as organizations and residents, to obtain financial leverage and municipal support for environmental, sustainable development or active transportation initiatives.

Sustainable Development Action Plan (SDAP)

We will also begin to plan for the renewal of the SDAP. You can consult the list of actions taken so far on page XX of this issue.

Community Trail and Access to the Gatineau River

The Municipality will continue its work to finalize the Community Trail. Although it is almost completed, there is still work to be done including the completion of the signage. In addition, guardrails and barriers have been included in the Three-Year Investment Plan and will be added this year.

Creation of active transportation trails in the Centre-Village

The operating budget provides for the construction of two new trails in the Center-Village. The first will encourage walking and cycling by providing an alternative to Chemin d'Old Chelsea with a trail that would run from Chemin Padden to Highway 5. We are still in the early stages of the project, but the trail is expected to be completed in 2021.

The second trail whose construction will also begin in 2021, will link the Hendrick Farm neighborhood to Chemin de la Mine.

In its Triennial Capital Expenses Plan, Council also adopted an amount to begin the development of

plans and specifications for a trail linking the Chelsea Creek neighbourhood to Technology Boulevard in Gatineau.

These new trails are the result of the public consultation on the renewal of the Active Transportation Plan. I am very pleased to announce that actions in this regard will be taken in the coming year.

Projects for youth and teens

A project is expected to begin in Ward 1 for the construction of a structure that will allow the youth of the neighbourhood to exercise. Given the lack of infrastructure in the neighbourhood, certain possibilities will be evaluated to address this situation.

An amount has also been set aside for the development of a gathering place for teenagers. Details has yet to be decided. I therefore invite teens to contact their municipal councillor to share with us what they would like to see!

Master Plan Revision

The next phase of the Master Plan revision will include public consultations and virtual workshops with community groups and stakeholders. The purpose of these consultations will be to establish the main directions and objectives that will guide land use planning in Chelsea for the coming years. We plan to hold these consultations soon.

Once again, your participation is essential since it will be the voice of future decisions in the coming years.

NCC Dispute

Council continues to work hard to recover the \$1.4 million the National Capital Commission (NCC) owes us for payments in lieu of taxes for the 2018, 2019 and 2020 fiscal years. This amount is significant for our municipality as it alone represents \$166 on the tax bill of an average residence, without including legal fees.

Finances



The hearing before the Payments in Lieu of Taxes Dispute Advisory Panel (DAP) took place in late November. We are now awaiting the panel's conclusion. However, it could still take a few months.

Adoption of policy for managers

The Municipal Council and the Municipality's executives agreed this month on their working conditions until 2022. We are very pleased since it is important for us to remain competitive in the market and thereby retain our executives.

COVID-19

Financial assistance of \$615,847 was also granted to the Municipality by the Government of Quebec to mitigate the financial effects of the pandemic on municipal finances for 2020 and 2021. The money allowed us to cover the additional expenses and loss of revenue related to the pandemic, but above all, it allowed us to avoid municipal tax increases for citizens and businesses for 2021, in addition to ensuring the protection of the services offered to them. This amount will also be used to support the Meredith Centre Foundation by covering the cost of electricity.

Main projects of the TCEP 2021-2023

Once again this year, Council has decided to invest in the projects identified as priorities: development and signage on the Community Trail, rehabilitation and development work on Chemin du Lac-Meech, and rehabilitation work on Chemin De la Rivière.

Conclusion

I would like to thank all the councillors for their dedication over the past three years. It is said that municipal politics is the level of government closest to residents and that is indeed the case. As a Municipal Council, we have given ourselves a mandate to listen to you and work with you on various projects. I would also like to thank all the volunteers who give their own time to work with us and the municipal administration on projects that they hold dear. Thank you also to all the members of the municipal committees who enable us to make informed decisions when the time comes.

Finally, I would like to thank the staff of the municipal administration for whom the year 2020 has been very special. With all the uncertainty, changes and impacts of COVID-19 on their work, they have kept their focus on the projects and, above all, ensured that the impact on services to residents was minimized as much as possible.

Abbreviated version. For the long version, visit

chelsea.ca/budget



RESIDUAL MATERIALS COLLECTION SCHEDULE 2021

- Recycling
- Household waste
- Compost
- Christmas trees
- Hazardous household waste
- Branches (deposit at the municipal garage)
- Delayed to the next day

January						February						March						April					
L	M	M	J	V		L	M	M	J	V		L	M	M	J	V		L	M	M	J	V	
	28	29	30	31	1		1	2	3	4	5		1	2	3	4	5		29	30	31	1	2
	4	5	6	7	8		8	9	10	11	12		8	9	10	11	12		5	6	7	8	9
	11	12	13	14	15		15	16	17	18	19		15	16	17	18	19		12	13	14	15	16
	18	19	20	21	22		22	23	24	25	26		22	23	24	25	26		19	20	21	22	23
	25	26	27	28	29		1	2	3	4	5		29	30	31	1	2		26	27	28	29	30

May						June						July						August					
L	M	M	J	V		L	M	M	J	V		L	M	M	J	V		L	M	M	J	V	
	3	4	5	6	7		31	1	2	3	4		28	29	30	1	2		2	3	4	5	6
	10	11	12	13	14		7	8	9	10	11		5	6	7	8	9		9	10	11	12	13
	17	18	19	20	21		14	15	16	17	18		12	13	14	15	16		16	17	18	19	20
	24	25	26	27	28		21	22	23	24	25		19	20	21	22	23		23	24	25	26	27
	31	1	2	3	4		28	29	30	1	2		26	27	28	29	30		30	31	1	2	3

September						October						November						December					
L	M	M	J	V		L	M	M	J	V		L	M	M	J	V		L	M	M	J	V	
	30	31	1	2	3		27	28	29	30	1		1	2	3	4	5		29	30	1	2	3
	6	7	8	9	10		4	5	6	7	8		8	9	10	11	12		6	7	8	9	10
	13	14	15	16	17		11	12	13	14	15		15	16	17	18	19		13	14	15	16	17
	20	21	22	23	24		18	19	20	21	22		22	23	24	25	26		20	21	22	23	24
	27	28	29	30	1		25	26	27	28	29		29	30	1	2	3		27	28	29	30	31

The pick-up will be done from Monday to Thursday. However, for statutory holidays, the pick-up will be postponed to the next day.

For special collection dates visit chelsea.ca

For units with curbside pickup, set waste out no earlier than 7 p.m. the evening before your collection day or before 7 a.m. the day of. Place it next to the sidewalk, curb, or road concession.

General information: 819-827-1124
 Info 3R (waste management): 819-827-3547
 Public Works: 819-827-1160

Emergency – Public Works: 819-827-9911
 Emergency (fire, police, ambulance): 911
 Police (administration): 819-459-2422

Animal Control Officer: 819-205-2908
 Website: chelsea.ca

Leisure

ON THE COMMUNITY TRAIL

- Keep dogs on a leash and clean up after them.
- Avoid damaging the classic ski tracks
- Share the trail and keep to the right so that other can pass.
- Cyclists, please yield to other trail users, ride at low speed and respectfully alert others when passing.
- Speak quietly in residential areas.
- Bring all your waste home. Leave no trace.

Even on the trail, keep a distance of 2 metres from others, and if you have symptoms, stay home.

PARKING

Chelsea residents whose property is not close to the Community Trail can park:

- at the Farm Point park parking lot located at 331 de la Chemin de la Rivière
- at the Chelsea CLSC located at 490 Route 105

COMMUNITY TRAIL CONDITIONS

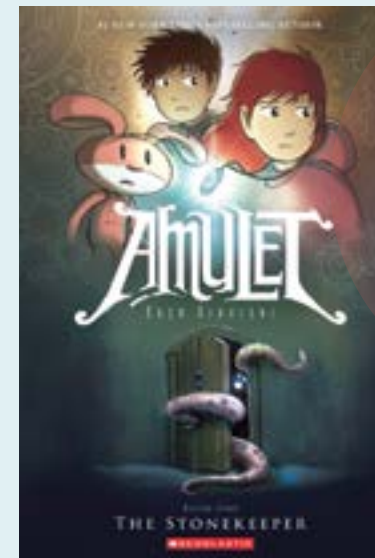
During the winter season, Community Trail conditions are posted weekly on our website to help you prepare for your outings. However, it is not always possible to release the information in time for the weekend since we depend on contractors and the weather. When we cannot, we usually do so the following Monday.

chelsea.ca/community-trail

Love Reading



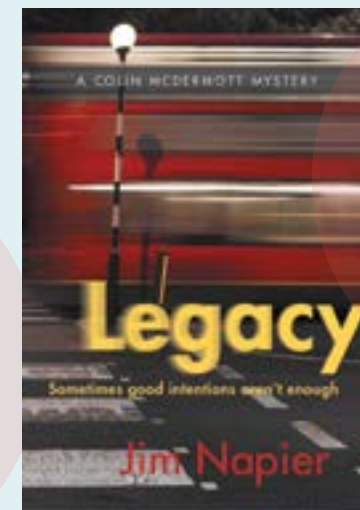
OUR EMPLOYEES' READING COUP DE COEUR



Corinne's son Coup de cœur

THE STONEKEEPERS BY KAZU KIBUISHI

After the tragic death of their father, Emily and Navin move with their mother to the home of her deceased great-grandfather, but the strange house proves to be dangerous. Before long, a sinister creature lures the kids' mom through a door in the basement. Em and Navin, desperate not to lose her, follow her into an underground world inhabited by demons, robots, and talking animals.



Annick's Coup de Coeur

LEGACY BY JIM NAPIER

There were three legacies in Sally Beck's brief life. The first was her grandmother's bequest, which allowed Sally to attend an elite girls' school. That was followed by the second, a life-changing event she experienced while a student there. The final legacy was due to Sally's chance encounter, years later, with someone from her past which set in motion a chain of violence no one could have foreseen.

When a young woman killed in London traffic is found to be carrying no identification, Detective Inspector Colin McDermott is assigned to figure out who she is and to track down her family so they can be notified. Soon he discovers she had not one but two identities, which concealed a very private life. When the trail leads back to McDermott's alma mater, the detective is faced with the possibility that the young woman was murdered—and whether an old friend and mentor is involved....

Public consultations



Access to the
Gatineau River
chelsea.ca/consultations-en



Councillor district 1

Simon Joubarne
819-607-1515
s.joubarne@chelsea.ca

Councillor district 2

Pierre Guénard
819-790-3662
p.guenard@chelsea.ca

Councillor district 3

Greg McGuire
819-210-3955
g.mcguire@chelsea.ca

Councillor district 4

Kay Kerman
819-827-4708
k.kerman@chelsea.ca

Councillor district 5

Jean-Paul Leduc
819-827-2782
jp.leduc@chelsea.ca

Councillor district 6

Kimberly Chan
873-354-6742
k.chan@chelsea.ca

Municipality of Chelsea

100, chemin d'Old Chelsea
Chelsea, QC J9B 1C1
info@chelsea.ca
chelsea.ca

Main numbers

City Hall 819-827-1124
Public Works 819-827-1160
Public Works (after-hours
emergency) 819-827-9911
Fire (general information)
819-827-6200

MRC des Collines-de-l'Outaouais
819-827-0516
Transcollines 819-456-1114
Emergency 911
Police 819-459-9911
Chelsea CLSC 819-459-1112
Info-Santé 811